

AMT Traditional Length G-Tubes

Order Numbers + Accessories

Traditional G-Tubes

Longer Length Gastrostomy Tubes

Balloon G-Tube

AMT	ORDER NUMBERS	ENFit® ORDER NUMBERS
12F	7-1210	7-1210-I
14F	7-1410	7-1410-I
16F	7-1610	7-1610-I
18F	7-1810	7-1810-I
20F	7-2010	7-2010-I
24F	7-2410	7-2410-I

AMT Balloon G-Tube Is Packaged 1/box
All ENFit® Balloon G-Tube kits are pouched with an ENFit® Single-Port to Y-Port Adapter and Pinch Clamp.

Balloon Fill Volumes

Recommended water fill volume is clearly printed on each Balloon G-Tube. Consult your healthcare provider before adjusting fill volumes.

Size	Min	Rec.	Max
12F	2 ml	2.5 ml	3 ml
14F	3 ml	4 ml	5 ml
16F	4 ml	6 ml	8 ml
18F	6 ml	8 ml	10 ml
20F	7 ml	10 ml	15 ml
24F	7 ml	10 ml	15 ml



Capsule Dome G-Tube

AMT	ORDER NUMBERS	ENFit® ORDER NUMBERS	DESCRIPTION
20F	9-C2020	9-C2020-I	W/O Guidewire
	9-CG2020	9-CG2020-I	W/Guidewire†
24F	9-C2420	9-C2420-I	W/O Guidewire
	9-CG2420	9-CG2420-I	W/Guidewire†

AMT Capsule Dome G-Tube Is Packaged 1/box
All ENFit® Capsule Dome kits are pouched with an ENFit® Single-Port to Y-Port Adapter and Pinch Clamp.
†Guidewire is included in a separate pouch, sterile, 90 cm length.

Replacement Adapters + Accessories

Device	Size	Description	Order #
Capsule Dome, Capsule Monarch®			
	12F	Purple Y-Port	4-2012
	14F	Purple Y-Port	4-2014
	15F	Clear Y-Port XL	4-2015
	20F	Clear Y-Port XL	4-2020
	24F	Clear Y-Port XL	4-2024
	12F	ENFit® Single-Port	4-2012-ISOSAF
	14F	ENFit® Single-Port	4-2014-ISOSAF
	20F	ENFit® Single-Port	4-2020-ISOSAF
Balloon, Capsule Dome, Capsule Monarch®			
	Universal ENFit®	ENFit® Single-Port to Y-Port	4-0005-ISOSAF
Avoid Disconnections with Tube Securement			
	9F - 30F	CINCH® Box of 10	TSD0406-10
		CINCH® Box of 50	TSD0406-50
	Legacy Connections	AMT CLAMP™ Box of 10	4-3000

*Replacement Adapters are sold 10/box. Feeding Adapters are individually pouched; a Pinch Clamp is included in each pouch.

Capsule Monarch® G-Tube

AMT	ORDER NUMBERS	ENFit® ORDER NUMBERS	DESCRIPTION
12F	9-C1210	9-C1210-I	W/O Guidewire
	9-CG1210	9-CG1210-I	W/Guidewire†
14F	9-C1410	9-C1410-I	W/O Guidewire
	9-CG1410	9-CG1410-I	W/Guidewire†
18F	9-C1810	9-C1810-I	W/O Guidewire
	9-CG1810	9-CG1810-I	W/Guidewire†
20F	9-C2010	9-C2010-I	W/O Guidewire
	9-CG2010	9-CG2010-I	W/Guidewire†

AMT Capsule Monarch® G-Tube Is Packaged 1/box
All ENFit® Capsule Monarch® kits are pouched with an ENFit® Single-Port to Y-Port Adapter and Pinch Clamp.
†Guidewire is included in a separate pouch, sterile, length varies by French size.



Balloon

Capsule Dome

Capsule Monarch®

Reduce Leaks

Improve Comfort + Safety

Ease of Placement

Exclusive Capsule Technology

For a complete list of products visit us at www.AppliedMedical.net
800 869 7382 | CS@AppliedMedical.net

ENFit® Ready



Made In USA



Connect with AMT



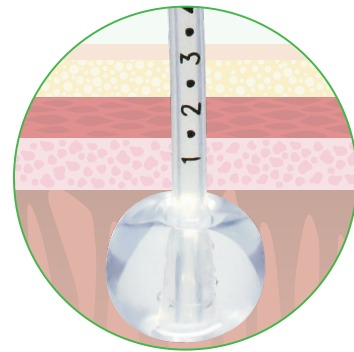
Applied Medical Technology, Inc.
8006 Katherine Boulevard
Brecksville, OH 44141
www.AppliedMedical.net
An ISO 13485 Registered Company CE

© 2019 Applied Medical Technology, Inc. C-4496-C
Patents: <http://www.AppliedMedical.net/Patents/> | Trademarks: <http://www.AppliedMedical.net/Trademarks/>
ENFit® is a registered trademark of GEDSA. | 1. Based on internal testing of 12F devices

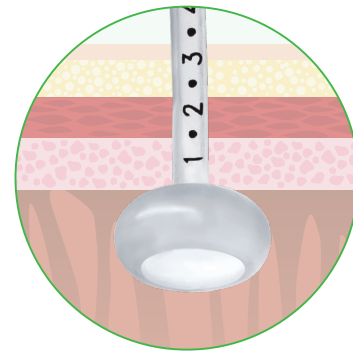


Innovating. Educating. Changing Lives.™

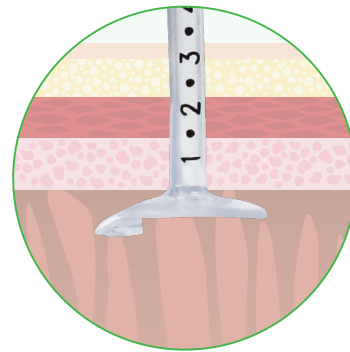
AMT Traditional Length G-Tubes An Advantage in Enteral Nutrition



Balloon



Capsule Dome



Capsule Monarch®

Exclusive AMT Capsule Technology Capsule Dome. Capsule Monarch®.

Ease of Placement

- Encapsulated internal bolster, self-lubricating to minimize discomfort during placement
- Often placed in the office or on-site
- Radiopaque for x-ray confirmation
- Guidewire compatible

Non-Balloon Internal Bolster

- Great alternative for patients who cannot sustain a balloon device
- Capsule Dome is durable + secure
- Capsule Monarch® internal bolster sits flush against the gastric wall

AMT Balloon G-Tube

Reduce Leaks

- Exclusive AMT Balloon expands horizontally to provide superior stoma coverage¹

Improve Comfort + Safety

- Balloon protects the distal tip of the tube, lowers the risk for gastric ulceration
- Enhanced External Retention Ring, minimizes contact and allows skin to breathe

Ease of Placement

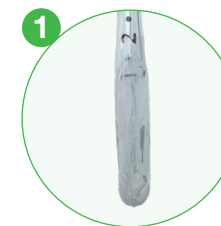
- Often placed in the office or on-site
- Tapered tip design for easier placement
- Guidewire compatible
- Radiopaque for x-ray confirmation

Balloon G-Tube

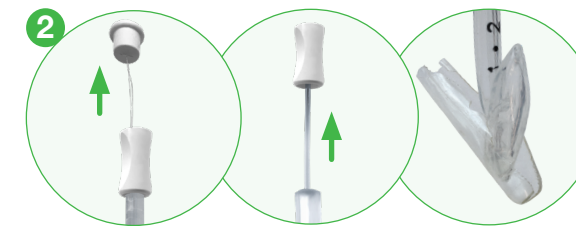
Legacy and ENFit®
12F – 24F



Stages of Capsule Bolster Deployment



Encapsulated Bolster Inserted into Established Stoma



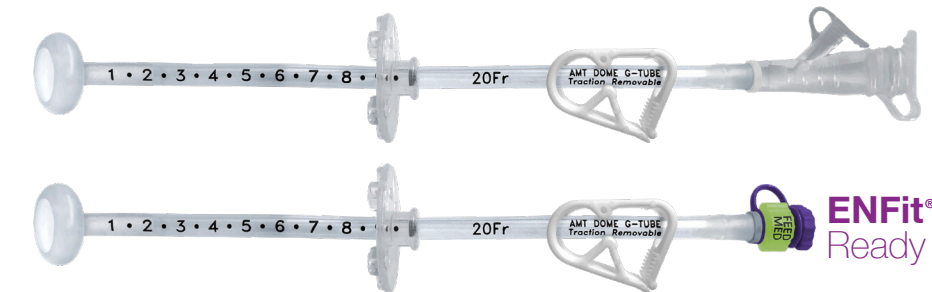
Tether Pulled to Split Capsule Material, Stiffener Removed



Capsule Material Falls Away and Dissolves Rapidly

Capsule Dome G-Tube

Legacy and ENFit®
20F, 24F



Capsule Monarch® G-Tube

Legacy and ENFit®
12F, 14F, 18F, 20F

