

CINCH[®]

Tube Securement Device | 9F - 30F

Patient Comfort First

CINCH[®] was designed with the most delicate skin in mind. Our hypoallergenic silicone adhesive provides a gentle yet secure attachment. The low-profile and flexible design of the CINCH[®] makes it comfortable and non-disruptive, even when it's not in use.

Safe + Secure

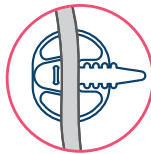
CINCH[®] promotes the health, safety, and comfort of patients by securely anchoring medical tubes while relieving stress and strain at insertion points.



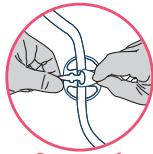
CLEAN



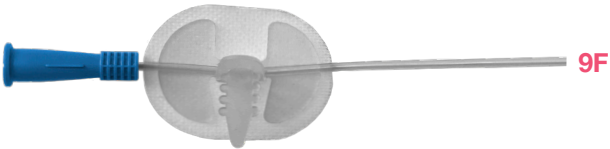
APPLY



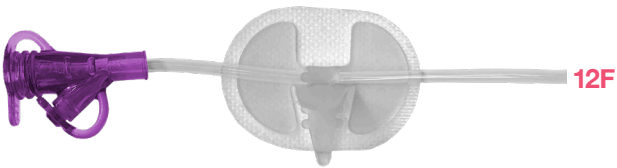
PLACE



SECURE



9F



12F



30F

CAUTION: If redness or irritation occurs, stop use and consult a healthcare professional. Do not over tighten. This document is not a substitute for the DFU (Directions for Use).
IMAGES ARE NOT TO SCALE.



Innovating. Educating. Changing Lives.™

New Standard of Care

Medical tubing doesn't have to slow you down. We've combined a soft and flexible silicone body with a breathable base material to give our patients comfort and mobility while holding their tubes securely in place.

Comfortable

Soft, low-profile, flexible

Versatile

Secures tubes 9F to 30F

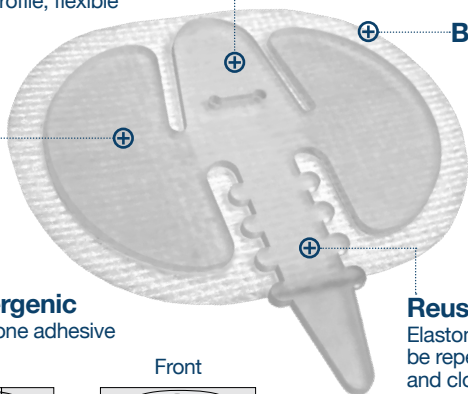
Breathable Backing

Hypoallergenic

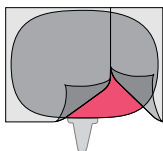
Gentle silicone adhesive

Reusable

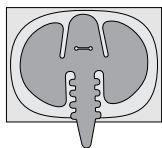
Elastomer strap can be repeatedly opened and closed



Back

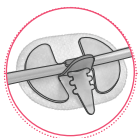


Front



Device comes fully assembled with an easy-peel split plastic backing.

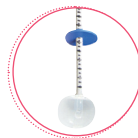
AMT Accessories



CINCH®
Tube Securement (10/box)
TSD0406-10
Tube Securement (50/box)
TSD0406-50



AMT Clamp™ (10/box)
4-3000



Balloon Stoma Measuring Device
Guidewire Compatible (10/box)
1804
Non-Guidewire Compatible (10/box)
1704

Innovating. Educating. Changing Lives.™

For a complete list of products visit us at www.AppliedMedical.net

800 869 7382

CS@AppliedMedical.net



Applied Medical Technology, Inc.
8006 Katherine Boulevard
Brecksville, OH 44141
www.AppliedMedical.net
An ISO 13485 Registered Company